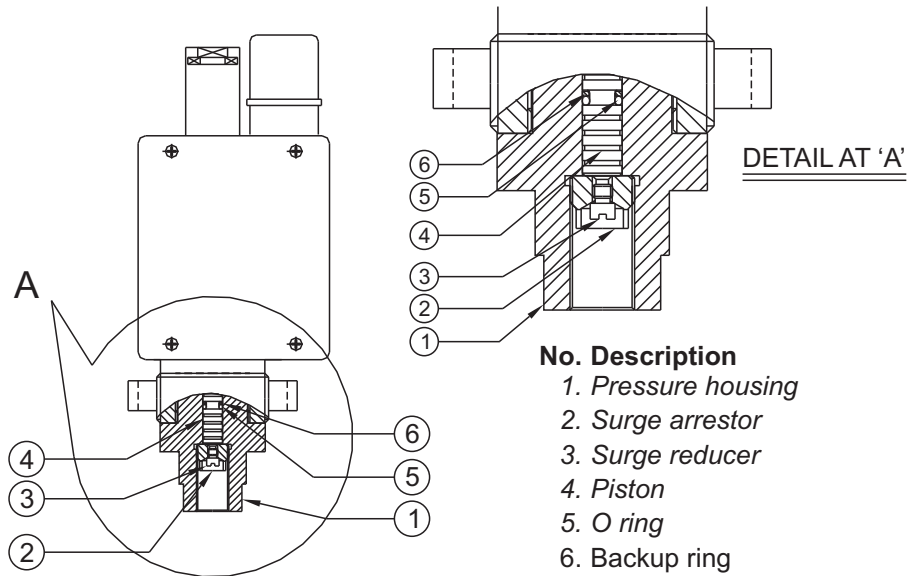


# DT HYDRAULIC PRESSURE SWITCHES

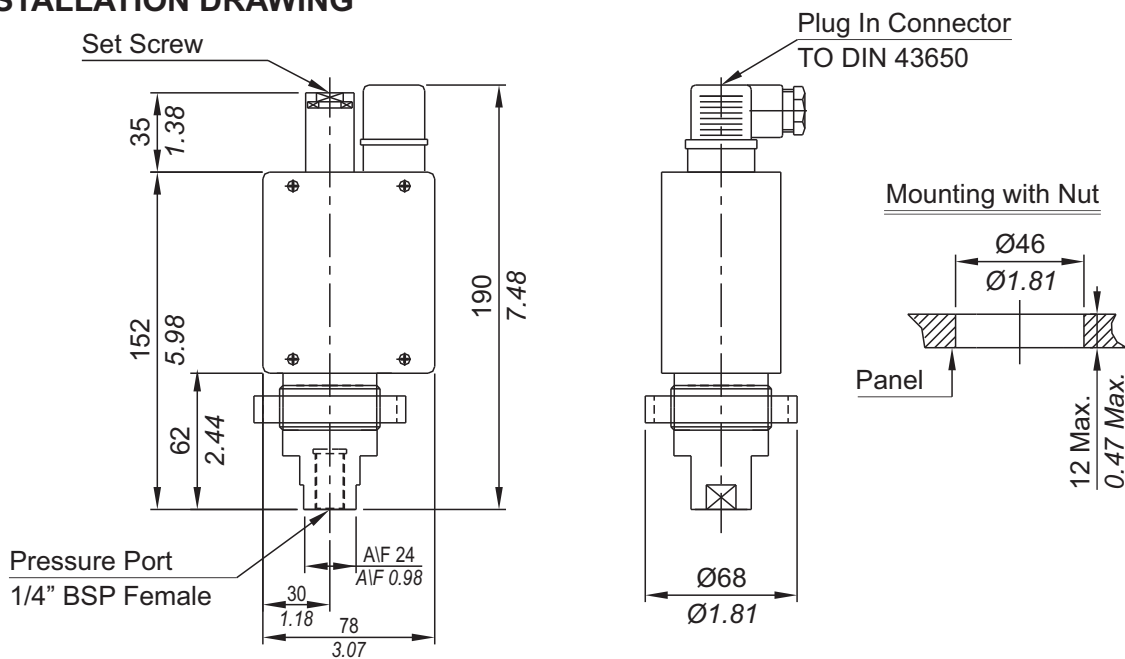


## PRESSURE CAPSULE DETAILS



Note : *wetted parts* are mentioned in italics.

## INSTALLATION DRAWING



APPROX. DIMENSIONS IN  $\frac{\text{mm}}{\text{inches}}$

# HYDRAULIC PRESSURE SWITCHES **DT**

## General information:

DT series pressure switches have a cast aluminium enclosure (IP54) and are recommended for panel / line mounted hydraulic applications. The repeat accuracy is better than  $\pm 2\%$  FSR. An electrical connector to DIN 43650 is provided for wiring. Pressure port is  $\frac{1}{4}$ " BSPF standard.

## Features:

- Robust construction
- 15 A switching possible (optional)
- Panel mounting
- Protective lock to avoid tampering (optional)
- Choice of wetted parts to suit working media
- Electrical rating : 5A, 250 VAC; 0.2 A, 250 VDC (res.)  
(Optionally 15A, 250 VAC)

**Some Applications :** Used for heavy duty machine tool applications, low on-off differential, better sensitivity, high electrical rating(15A), etc.

## Range Selection Table

Range Code	Range (rising pressure) bar (psi)	*Approximate Maximum Differential bar (psi)	Maximum Working Pressure bar (psi)
20A	4 - 20 (58.01 - 290.08)	3 (43.51)	200 (2900.76)
40	5 - 40 (72.52 - 580.15)	5 (72.52)	80 (1160.3)
100	10 - 100 (145.04 - 1450.38)	12 (174.05)	120 (1740.45)
200	7 - 200 (101.52 - 2900.76)	24 (348.09)	200 (2900.76)
400	100 - 400 (1450.38 - 5801.51)	40 (580.15)	400 (5801.51)
600	60 - 600 (870.22 - 8702.26)	90 (1305.34)	600 (8702.26)

\*differential rises with setpoint (Graphs available on request)

## Wetted Parts Table for DT Series.

	Standard	Optional	Special
Piston	EN8	S.S.	for special wetted parts through chemical seals, please refer page 300 & 301 and specify in text accordingly.
*Backup ring	PTFE	PTFE	
O ring	Viton	Viton	
Pressure housing	Aluminium	Brass	
Surge suppressor	EN8	Brass	
Surge reducer	Brass	Brass	

\* Backup ring is not used in all pressure ranges. Please contact sales office for details.

## How to order DT series hydraulic pressure switches.

Group 1	Group 2	Group 3	Group 4	Group 5	Group 6
Model	Range Code	Microswitch	Wetted Parts	Protective Lock	
DT - Hydraulic Pressure Switch	Please select as per range code table	C - rated at 5A, 250 VAC H - rated at 15A, 250 VAC	S - for Standard Wetted parts B - for optional wetted parts mentioned in table above X - Specify wetted parts in text as per technical details table above	U - without any lock P - with a protective lock	Reserved for non standard modifications. Code will be given by company

eg. A hydraulic pressure switch, pressure range from 5 to 40 bar, with a standard 5A, 250 VAC microswitch, standard wetted parts and a protective lock shall be specified by

Group 1	Group 2	Group 3	Group 4	Group 5	Group 6
DT	40	C	S	P	-

Please specify full model number to avoid ambiguity. If only the first two groups are specified while ordering, pressure switches with standard wetted parts will be supplied.